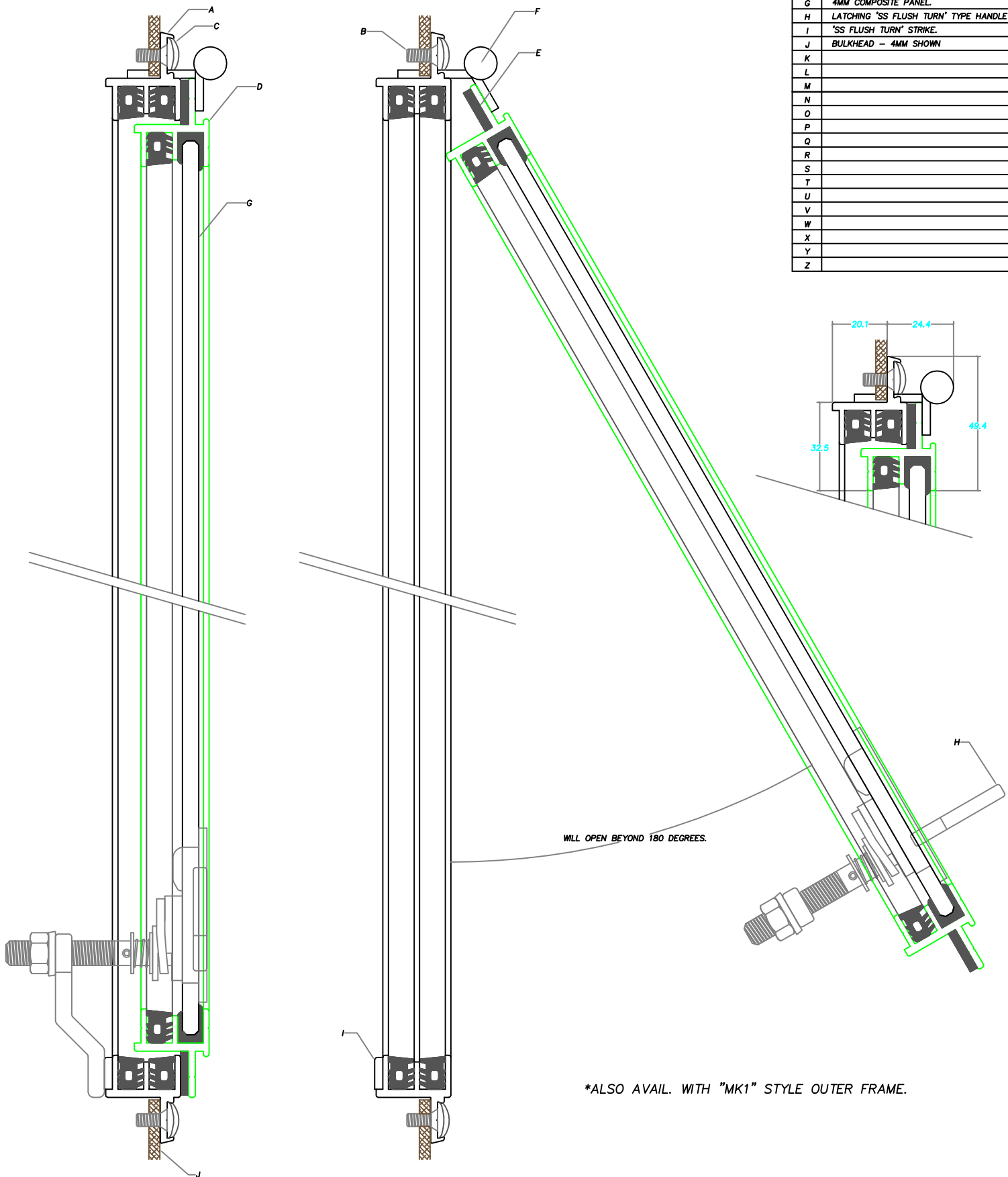


**USE DIMENSIONS – DO NOT SCALE DRAWING**  
 IF IN DOUBT – ASK WINDOWS WEST

REV.		DRAWN	DATE
A	–	–	–

A	MK2 OUTER FRAME 6060T1 ALUMINIUM
B	3/16" 316 S/S FRAME FIXING SCREWS
C	TRIM INSERTION P.V.C.
D	SASH FRAME 6060T1 ALUMINIUM
E	EPDM FOAM SEAL
F	ALUMINIUM HINGES.
G	4MM COMPOSITE PANEL
H	LATCHING 'SS FLUSH TURN' TYPE HANDLE
I	'SS FLUSH TURN' STRIKE.
J	BULKHEAD – 4MM SHOWN
K	
L	
M	
N	
O	
P	
Q	
R	
S	
T	
U	
V	
W	
X	
Y	
Z	



**Windows West Pty. Ltd.**  
 8 Redemptora Road Henderson, WA 6166 AUSTRALIA  
 Phone: +61 8 9437 9277 Fax: +61 8 9437 9080  
 E-mail: sales@windowswest.com.au Web: www.windowswest.com.au  
 ACN. 070 345 758

COPYRIGHT: THIS DRAWING IS THE EXCLUSIVE PROPERTY OF WINDOWS WEST PTY LTD AND MUST NOT BE COPIED OR REPRODUCED IN WHOLE OR IN PART WITHOUT PERMISSION IN WRITING.  
 2009. All Rights Reserved.

CLIENT	–	TITLE	STORAGE LOCKERS
PROJECT		SUB-TITLE	MK2 OUTER.
		SCALE	DWG No
DRAWN	P.M.	1.06.05	
CHECKED	P.M.	2.06.05	
ISSUED	–	–	JOB NO.:
SUPERCEDED	–	–	Rev: 0